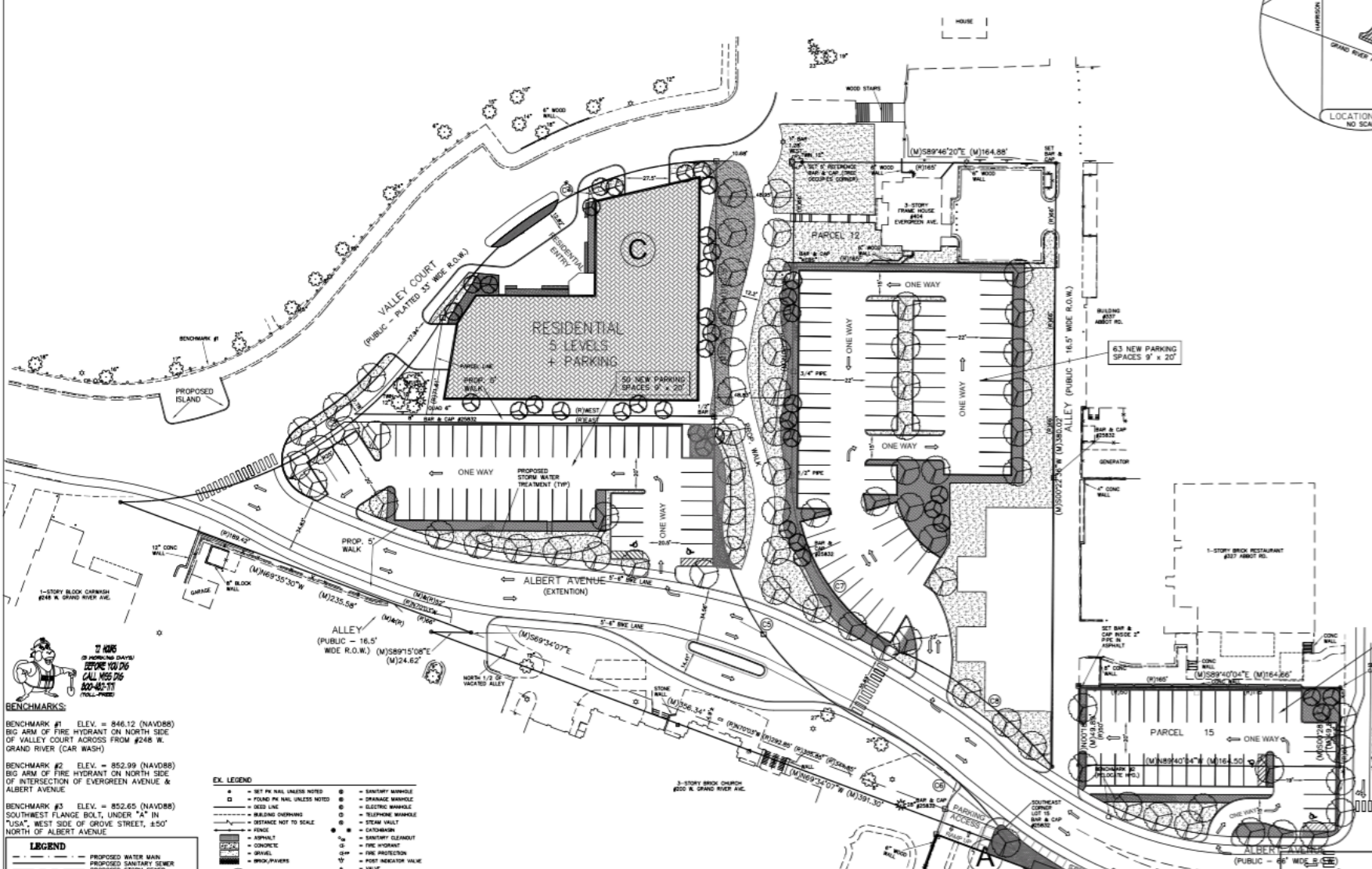
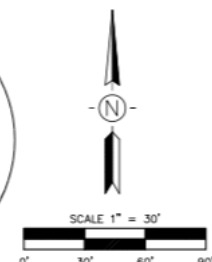
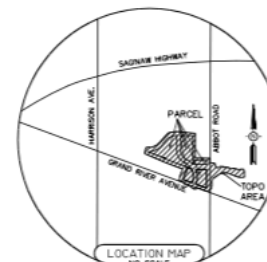


341-345 Evergreen Avenue

CITY OF EAST LANSING, INGHAM COUNTY, MICHIGAN



BENCHMARKS:
 BENCHMARK #1 ELEV. = 846.12 (NAVD88)
 BIG ARM OF FIRE HYDRANT ON NORTH SIDE OF VALLEY COURT ACROSS FROM #248 W. GRAND RIVER (CAR WASH)
 BENCHMARK #2 ELEV. = 852.99 (NAVD88)
 BIG ARM OF FIRE HYDRANT ON NORTH SIDE OF INTERSECTION OF EVERGREEN AVENUE & ALBERT AVENUE
 BENCHMARK #3 ELEV. = 852.65 (NAVD88)
 SOUTHWEST FLANGE BOLT, UNDER "A" IN "USA" WEST SIDE OF GROVE STREET, 850' NORTH OF ALBERT AVENUE

- EX. LEGEND**
- = SET PK NAIL UNLESS NOTED
 - = FOUND PK NAIL UNLESS NOTED
 - = SEED LINE
 - = BRACING OPENING
 - - - = DISTANCE NOT TO SCALE
 - = FENCE
 - = ASPHALT
 - = CONCRETE
 - = DRIVEWAY
 - = DRIVEWAY
 - = EXISTING CONTOUR ELEVATION
 - = SANITARY SEWER
 - = STORM SEWER
 - = WATER LINE
 - = UNDERGROUND ELECTRIC
 - = OVERHEAD WIRE
 - = OVERHEAD WIRE
 - = OVERHEAD WIRE
 - = OVERHEAD WIRE
 - = GAS VALVE
 - = SANITARY MANHOLE
 - = DRAINAGE MANHOLE
 - = ELECTRIC MANHOLE
 - = TELEPHONE MANHOLE
 - = STEAM WALK
 - = CATCHBASIN
 - = SANITARY ELEVATION
 - = FIRE HYDRANT
 - = FIRE PROTECTION
 - = FIRE PROTECTION
 - = VALVE
 - = UTILITY POLE
 - = TRAFFIC SIGNAL
 - = LIGHT POLE
 - = SET WIRE
 - = UTILITY PEDESTAL
 - = TRANSFORMER
 - = MANHOLE
 - = ELECTRIC METER
 - = GAS METER
 - = WATER METER
 - = SIGN
 - = POLE
 - = AIR CONDITIONING UNIT

CURVE TABLE

ST. NO.	STATIONING	CHORD BEARING	CHORD BEARING
1	1248.00	235.62°	299.90°
2	1250.00	126.52°	126.52°
3	1252.00	188.20°	60.00°
4	1254.00	126.52°	126.52°
5	1256.00	126.52°	126.52°
6	1258.00	126.52°	126.52°
7	1260.00	126.52°	126.52°
8	1262.00	126.52°	126.52°
9	1264.00	126.52°	126.52°
10	1266.00	126.52°	126.52°
11	1268.00	126.52°	126.52°
12	1270.00	126.52°	126.52°
13	1272.00	126.52°	126.52°
14	1274.00	126.52°	126.52°
15	1276.00	126.52°	126.52°
16	1278.00	126.52°	126.52°
17	1280.00	126.52°	126.52°
18	1282.00	126.52°	126.52°
19	1284.00	126.52°	126.52°
20	1286.00	126.52°	126.52°
21	1288.00	126.52°	126.52°
22	1290.00	126.52°	126.52°
23	1292.00	126.52°	126.52°
24	1294.00	126.52°	126.52°
25	1296.00	126.52°	126.52°
26	1298.00	126.52°	126.52°
27	1300.00	126.52°	126.52°
28	1302.00	126.52°	126.52°
29	1304.00	126.52°	126.52°
30	1306.00	126.52°	126.52°
31	1308.00	126.52°	126.52°
32	1310.00	126.52°	126.52°
33	1312.00	126.52°	126.52°
34	1314.00	126.52°	126.52°
35	1316.00	126.52°	126.52°
36	1318.00	126.52°	126.52°
37	1320.00	126.52°	126.52°
38	1322.00	126.52°	126.52°
39	1324.00	126.52°	126.52°
40	1326.00	126.52°	126.52°
41	1328.00	126.52°	126.52°
42	1330.00	126.52°	126.52°
43	1332.00	126.52°	126.52°
44	1334.00	126.52°	126.52°
45	1336.00	126.52°	126.52°
46	1338.00	126.52°	126.52°
47	1340.00	126.52°	126.52°
48	1342.00	126.52°	126.52°
49	1344.00	126.52°	126.52°
50	1346.00	126.52°	126.52°
51	1348.00	126.52°	126.52°
52	1350.00	126.52°	126.52°
53	1352.00	126.52°	126.52°
54	1354.00	126.52°	126.52°
55	1356.00	126.52°	126.52°
56	1358.00	126.52°	126.52°
57	1360.00	126.52°	126.52°
58	1362.00	126.52°	126.52°
59	1364.00	126.52°	126.52°
60	1366.00	126.52°	126.52°
61	1368.00	126.52°	126.52°
62	1370.00	126.52°	126.52°
63	1372.00	126.52°	126.52°
64	1374.00	126.52°	126.52°
65	1376.00	126.52°	126.52°
66	1378.00	126.52°	126.52°
67	1380.00	126.52°	126.52°
68	1382.00	126.52°	126.52°
69	1384.00	126.52°	126.52°
70	1386.00	126.52°	126.52°
71	1388.00	126.52°	126.52°
72	1390.00	126.52°	126.52°
73	1392.00	126.52°	126.52°
74	1394.00	126.52°	126.52°
75	1396.00	126.52°	126.52°
76	1398.00	126.52°	126.52°
77	1400.00	126.52°	126.52°
78	1402.00	126.52°	126.52°
79	1404.00	126.52°	126.52°
80	1406.00	126.52°	126.52°
81	1408.00	126.52°	126.52°
82	1410.00	126.52°	126.52°
83	1412.00	126.52°	126.52°
84	1414.00	126.52°	126.52°
85	1416.00	126.52°	126.52°
86	1418.00	126.52°	126.52°
87	1420.00	126.52°	126.52°
88	1422.00	126.52°	126.52°
89	1424.00	126.52°	126.52°
90	1426.00	126.52°	126.52°
91	1428.00	126.52°	126.52°
92	1430.00	126.52°	126.52°
93	1432.00	126.52°	126.52°
94	1434.00	126.52°	126.52°
95	1436.00	126.52°	126.52°
96	1438.00	126.52°	126.52°
97	1440.00	126.52°	126.52°
98	1442.00	126.52°	126.52°
99	1444.00	126.52°	126.52°
100	1446.00	126.52°	126.52°

REVISIONS

NO.	DATE	DESCRIPTION	BY
1	6-14-16	COMBINED SITE/SUBMITTAL	JMK
2	7-14-16	RESUBMITTAL	JMK
3	7-14-16	RESUBMITTAL	JMK

KEBS, INC.
 2116 HAZLETT ROAD, HAZLETT, MI 48840
 PH. 517-338-1014 FAX 517-338-8047
 March 2016
 Ph. 269-781-9800

341-345 Evergreen Avenue

PRELIMINARY DIMENSION PLAN

SCALE: 1" = 30'
 DATE: 7-27-16
 AUTHORIZED BY: NEW FINANCE, LLC
 2/5 CONVEYANCE PROPERTIES, LLC

DESIGNED BY: JMK
 CHECKED BY: JMK
 PROJECT MGR.: JMK
 SHEET: C-006
 JOB #: 90736